



Electronic Sensors, Inc.

Level Devil® 600 Series Software

DESCRIPTION

Level Devil® is a powerful software program used to collect, store, display and manage an enormous amount of liquid tank level information. It is a networkable Windows based program designed to be very easy to use. The most comprehensive software program of its kind available. It allows for a company wide utilization of a computerized bulk inventory management system, with rapid and automated inventory tracking capabilities. Typical applications include Tank Farm Management (TFM), Vendor Managed Inventory (VMI), Supply Chain Management (SCM), and full and less than full truck load routing.

LEVEL DEVIL® IN GENERAL

The building block of **Level Devil®** is its main screen which is a "quick-glance" compilation of data in a spread sheet format. Each spreadsheet row contains user-selected information about a specific tank, and the total spreadsheet is sortable in a variety of orders: Low Level, High Level, Total Volume, Tank Contents, etc. An assortment of pop down menus allows users to select other features including the setup and managing of sites and tanks. Multiple users may have access to **Level Devil®**, each with their own set of privileges.

Level Devil® is a multiple entry level program allowing a company to start simple and add features as their requirements change. Each **Level Devil®** entry point adds new features and program capabilities, but keeps the same look and feel - so users pick up the new features and feel right at home.

The screenshot shows the Level Devil software interface. At the top, it displays 'Current Information' including 'USER: ESI', 'TIME: 4:28:09 PM', and 'DATE: 12/17/02'. There is a message display area that says 'This is a Message display area'. On the right side, there are status indicators: 'Off Line', 'Auto Call Disabled', 'Call List: DEMO', and a 'Sort Order' dropdown menu set to 'Group, Site, Tank'. Below this is a large table with columns for Group, Site, Tank, Level, Product Name, Amount, Units, Last Date, and Location. The table contains 17 rows of data for various tanks and their levels.

Group	Site	Tank	Level	Product Name	Amount	Units	Last Date	Last Time	Location
0999	0100	1	Ok	Waste Water	1271	Gallons	104.4	12/14/02 1:01:30 PM	North Warehouse
0999	0100	3	Low	Waste Oil	11	Gallons	0.8	12/17/02 1:20:31 PM	East Side Lube
0999	0101	1	Low	Waste Oil	162	Gallons	6.4	12/17/02 1:20:31 PM	East Side Lube
0999	0102	1	Ok	Waste Oil	4247	Gallons	86.8	12/14/02 1:02:23 PM	South Plant
0999	0102	2	Low	Waste Water	1055	Gallons	31.1	12/14/02 1:02:25 PM	Plant 2
0999	0102	3	Low	Waste	2507	Gallons	73.9	12/14/02 1:02:27 PM	Plant 3
0999	0102	4	Ok	Heavy Waste	8647	Gallons	89.4	12/14/02 1:02:29 PM	Warehouse 4
0999	0102	5	Ok	Light Waste	3642	Gallons	74.8	12/14/02 1:02:30 PM	South Plant War
0999	0102	7	Low	Production Waste	848	Gallons	25	12/14/02 1:02:35 PM	Building 10
0999	0103	1	Ok	Waste Oil	2333	Gallons	71.3	12/14/02 5:34:07 AM	North East Plant
0999	0104	1	Ok	Waste Oil	46	Gallons	46	12/14/02 5:38:00 AM	Production
0999	0105	1	Ok	Waste Oil	8544	Gallons	86.2	12/14/02 1:00:40 PM	Newton Plant St
0999	0105	1	Ok	Waste Oil	45	55gal. Units	72.8	12/14/02 1:04:22 PM	Building #1
0999	0106	2	Ok	Waste Water	420	Gallons	105.8	12/14/02 1:04:24 PM	Building #1
0999	0107	1	Ok	Waste Oil	4629	Gallons	140.3	12/14/02 1:05:13 PM	Lot 1
0999	0107	3	Ok	Waste Water	7332	Gallons	89.4	12/14/02 1:05:15 PM	Lot 3
0999	0108	1	Low	Waste Oil	1508	Gallons	88.5	12/14/02 1:06:06 PM	Yard
0999	0109	1	Ok	Waste Oil	4255	Gallons	103.7	12/14/02 6:04:13 AM	Main Building
0999	0110	1	Ok	Production Waste	3063	Gallons	90.3	12/14/02 1:06:59 PM	Building 1

Electronic Sensors, Inc.

**2063 S Edwards St
Wichita, KS 67213**

Rev 10/09

Phone: 316-267-2807

Toll Free: 800-886-2511

Fax: 316-267-2819

Email: leveldevil@leveldevil.com

Home Page: www.leveldevil.com



Level Devil® 600 Series Software

AVAILABLE ENTRY POINTS

TV6-MC (Manual Call)

TV6-MC allows the calling of sites and displaying tank data on the spreadsheet screen. Each tank contacted is time stamped so freshness of data is known.

TV6-AC (Auto Call)

TV6-AC allows all the features of TV6-MC and adds the ability to setup a call list so sites may be called automatically. This feature is useful for calling sites at night, when phone rates are at their lowest and the sites are likely unattended.

TV6-TH (Time History)

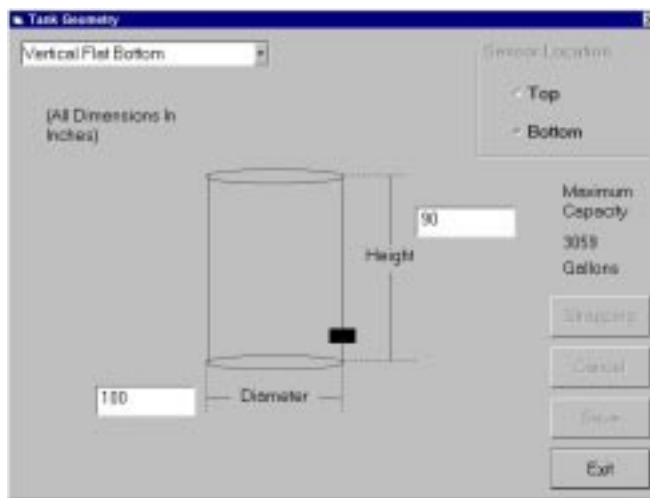
TV6-TH has all the features of TV6-AC and adds the ability to review older tank data. Tank data is stored in an MS Access 97 database which may be viewed in plotted or tabular form or exported to a spreadsheet. The information can also be generated in paper form using a printer, or plot printing device.

TV6-AA (Auto Answer)

TV6-AA allows all the features of TV6-TH and adds the ability to auto answer sites which are setup for calling in.

TV6-FC (Forecasting)

TV6-FC allows all the features of TV6-AA and adds the ability to forecast tank levels using previous data.



REQUIREMENTS

Windows 95, 98, 2000 or NT4.0

CD ROM drive

100mhz 486 PC or higher

16MB RAM minimum, 32MB+ recommended for all versions

190MB free storage on hard drive

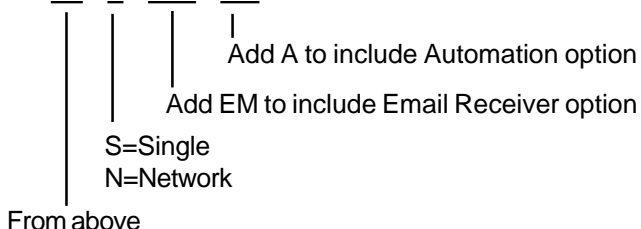
Modem (optional) – Allows the calling or receiving of site data through a phone line. **Note:** Must be a controller based modem, Win Modems are not supported.

Email receiver (-EM) (optional) – Allows the receiving of site data from the internet through email. All email data is converted and stored in the MS Access 97 database as if it had come in from a modem. Required when receiving data from satellite and pager remote transmit units.

Automation option – see Automation cut sheet

HOW TO ORDER

TV6 - xx - x - EM - A1



Your Area Representative:



Electronic Sensors, Inc.

2063 S Edwards St • Wichita, KS 67213
Phone: 316-267-2807 • Fax: 316-267-2819
Toll Free: 800-886-2511
Email: leveldevil@leveldevil.com
Home Page: www.leveldevil.com

